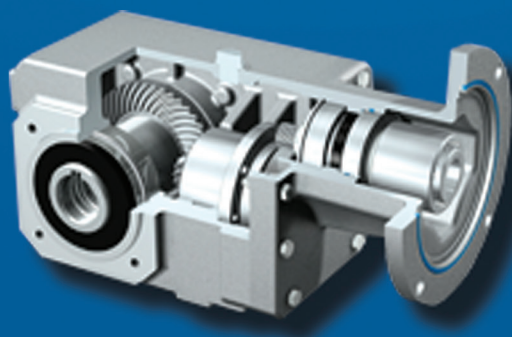




STÖBER

Industrial NEMA Solutions



Geared to a higher standard®

STOBER Drives Inc., Maysville KY

Contact:

www.stober.com

1-800-711-3588

sales@stober.com



**Take a virtual
tour of STOBER!**



Solutions for Your Industry

STOBER is committed to being an end user partner. We have product offerings for a variety of industries. Every gearbox comes with a three year warranty, 24/7 support, and no maintenance!

Material Handling

Food & Beverage

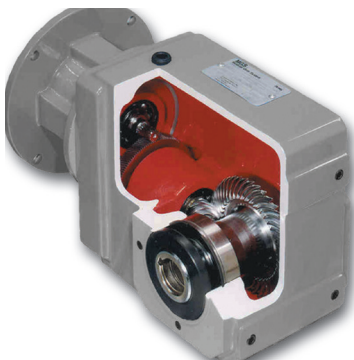


Tires

Textile or Carpet

Shingles

MGS – Modular Gear System Speed Reducers

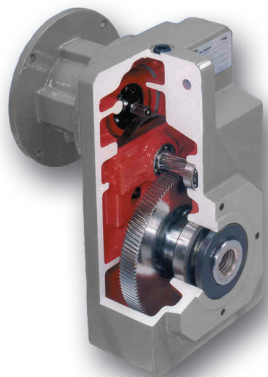
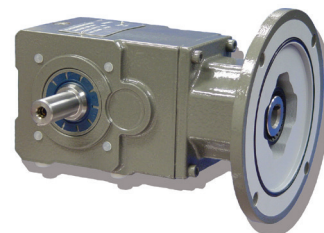


"K" Series – Right Angle Helical/Bevel

- Horsepower ratings from $\frac{1}{6}$ to 165
- Output torques to 106,296 in. lbs.
- Output speeds available from 437 to 4.5 RPM
- Speed reducer ratios from 4:1 to 381:1
- 3 year warranty standard with option for 5 years
- Available corrosion resistant duty, food duty, stainless steel, and IP69K.

"KL" Series – Right Angle Helical/Bevel

- Compact symmetrical gear reducer
- Speed reducer ratios 4:1, 8:1, 16:1 and 32:1
- 3 year warranty standard with option for 5 years
- Available corrosion resistant duty, food duty, and IP69K.

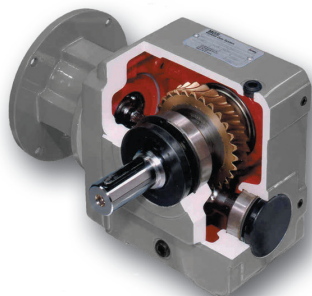


"F" Series – Offset/Helical

- Horsepower ratings from $\frac{1}{6}$ to 33
- Output torques to 9,743 in. lbs.
- Output speeds available from 406 to 3 RPM
- Speed reducer ratios from 4.3:1 to 552:1
- 3 year warranty standard with option for 5 years
- Available corrosion resistant duty, food duty, and IP69K.

"C" Series – Concentric Helical

- Horsepower ratings from $\frac{1}{6}$ to 165
- Output torques to 62,000 in. lbs.
- Output speeds available from 875 to 6.3 RPM
- Speed reducer ratios from 2.0:1 to 276:1
- 3 year warranty standard with option for 5 years
- Available corrosion resistant duty, food duty, and IP69K

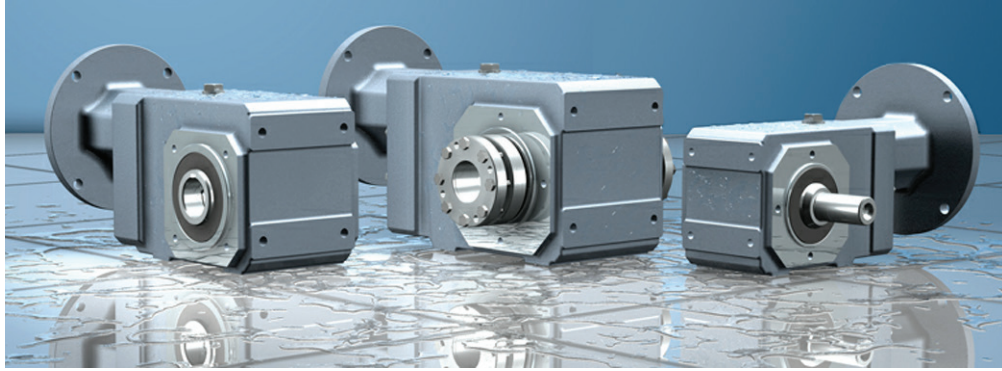


"S" Series – Right Angle Helical/Worm

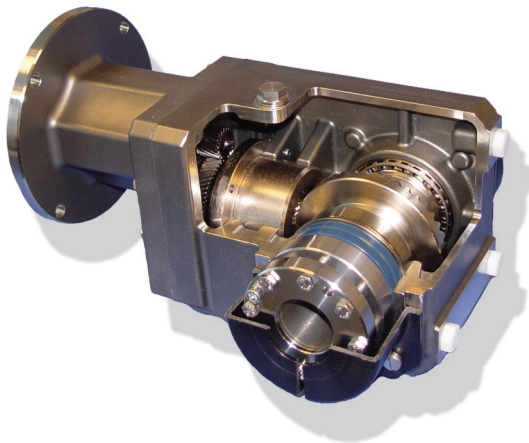
- Horsepower ratings from .12 to 8.19
- Output torques to 7,086 in. lbs.
- Output speeds available from 190 to 2.5 RPM
- Speed reducer ratios from 9.2:1 to 683:1
- 3 year warranty

Stainless Steel Speed Reducers

Keeping food processing production in compliance with Food and Drug Administration (FDA) regulations just got easier with STOBBER's stainless steel gearboxes. Since equipment has to be able to withstand extreme cleaning solutions, STOBBER wanted to provide a solution to meet these harsh requirements. The "KSS" can withstand the cleaning regimens needed to meet the most stringent sanitation rules.



Available with hollow output, double side bushing, or solid shaft



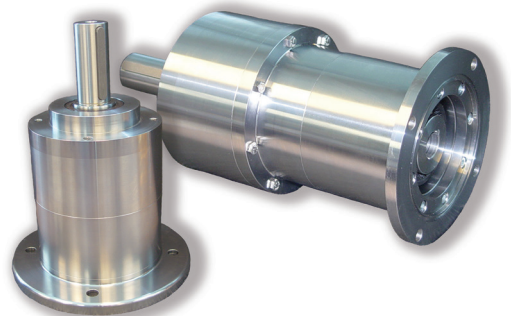
"KSS" Series – Right Angle Helical/Bevel

- ALL stainless steel electropolished housings made with cast 308 stainless steel and 1 7/8" output shafts or quills
- Output torques up to 4,872 in. lbs.
- Runs cool, last longer, and saves energy
- Speed reducer ratios up to 272:1
- Lubed for life with SHC CIBUS 220-H1 Food Grade Lubrication
- 3 year warranty
- Available with a stainless steel torque arm for flexible mounting
- Available with any horizontal output mounting



"PSS" Series – Planetary Helical Gear Unit

- Machined, not cast, from 16-2 Stainless Steel bar stock
- Plunge ground finish housing
- Output torques up to 3,894 in. lbs.
- Bowex coupling input for ease of assembly
- Lubed for Life SHC CIBUS 220-H1 Food Grade Lubrication
- 3 year warranty
- Exact alignment and minimal wear



Total Cost of Ownership

The total cost of owning any product is more than the original price. In the event of a breakdown, many factors will add to the price of using a product that is less reliable or of lower quality than a STÖBER gearbox. The versatility and interchangeability of our components allow most products to be shipped in 1 day.

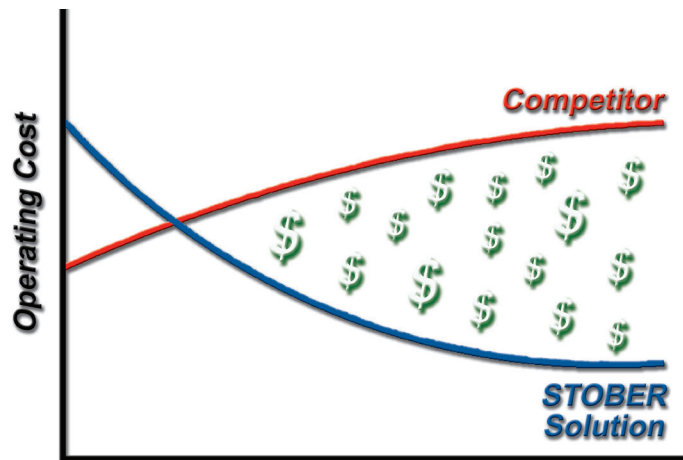


No Maintenance – Sealed for Life

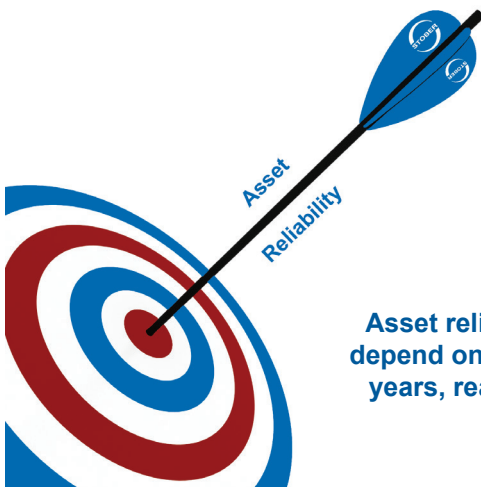
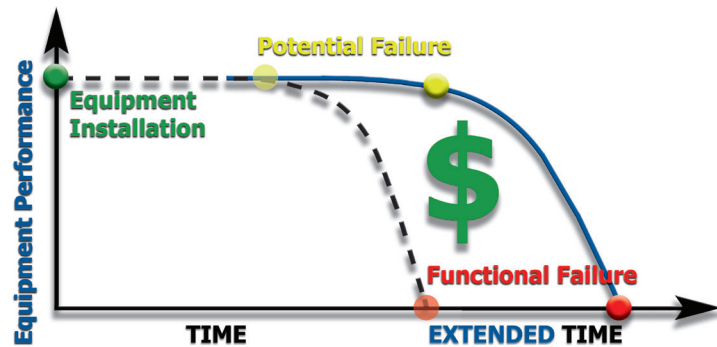


Store Room Optimization – STÖBER gearboxes are reliable so you don't need to stock them!

TCO Factors



$$\begin{array}{c}
 \$ \times \$ \times \$ \times \$ \times \$ \times \$ \times \$ \\
 \text{Maintenance Cost} \quad \text{Engineering Cost} \quad \text{Travel Cost} \quad \text{Down Time Cost} \quad \text{Replacement Cost} \quad \text{Energy Cost} \quad \text{Inventory Cost}
 \end{array}
 = \$ \text{Total Cost of Ownership}$$



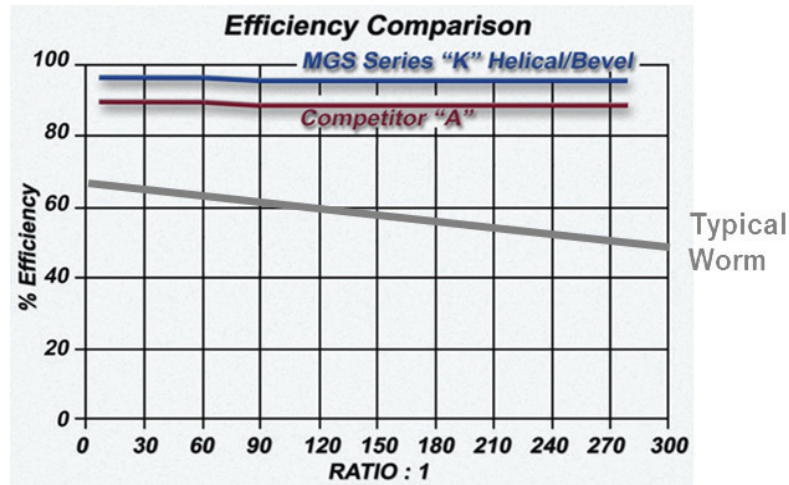
Asset reliability means you can depend on a STÖBER gearbox for years, reaching your efficiency targets!



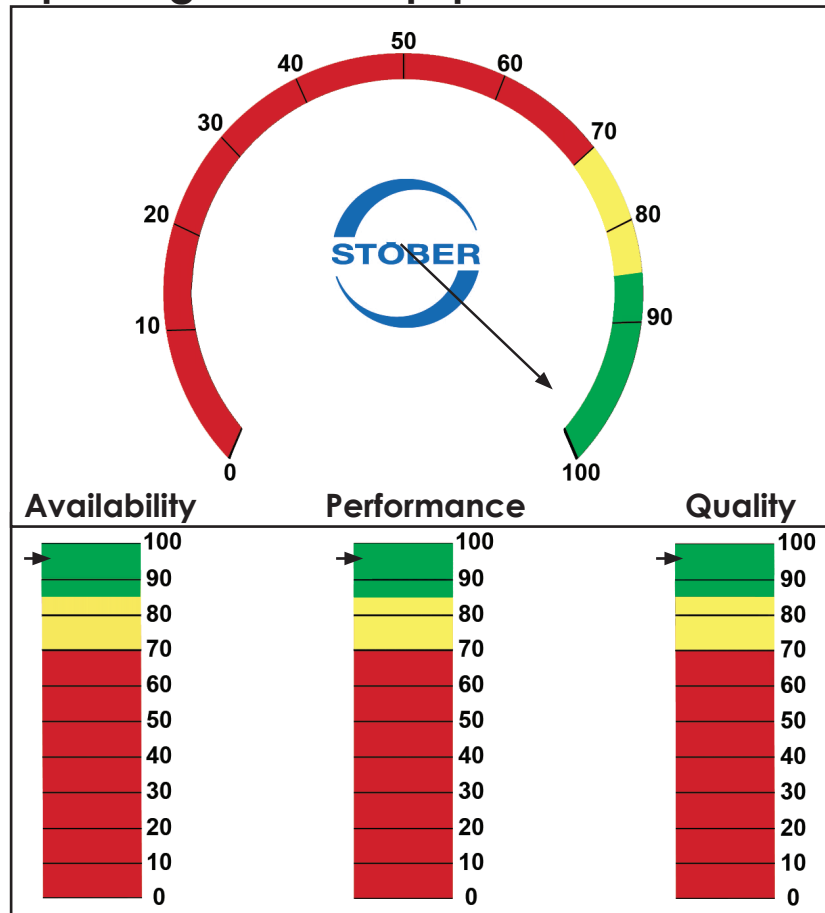
STÖBER Geared to a higher standard™

Total Cost of Ownership

STOBER's gearboxes are also the most efficient in the market. Our "K" helical bevel gear reducer has a 97% efficiency. Not only will this efficiency save you money on energy costs but also help you have highly effective equipment.



Improving Overall Equipment Effectiveness



Delivering the World's Best Gear Solutions

The design of a STÖBER drive begins with the end in mind. Our inspired German engineering starts with finding the highest quality parts. All our gears are hobbled and ground to ensure the best quality. We also only use the highest quality bearings, seals, and lubricants. All of this means STÖBER can provide the best gear solutions with an industry leading warranty!

High Quality Gears and Housings



&



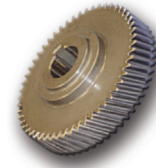
&



&



=



Inspect housings

Hobbed

Ground

Measured

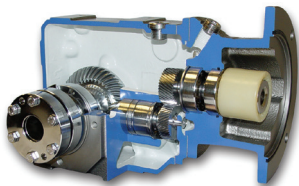
Highest
quality
gear

Superior Parts



Industry Leading Warranty

3 and 5 YEAR WARRANTY



Industry leading warranty possible because:

- No vents in the gearboxes
- Magnetic drain plugs to capture internal particles
- Flexible coupling eliminates misalignment
- Gears supported with dual bearings in one piece housing for structural rigidity
- High quality gears and housings
- Superior parts

Unsurpassed Service

Our goal is to serve our clients with excellence and base every decision on our core values. Every STOBBER employee strives to deliver the gold standard of quality and service. STOBBER seeks the best in order to live up to being geared to a higher standard!

SHIPS in 1 DAY

Most sizes are available with
STANDARD 1 DAY SHIPPING.



SAME DAY EMERGENCY SHIPPING

24 Hours – No expedite fee
Daytime Phone: 606 759-5090
On-Call Emergency: 606 563-6035

Service When You Need It

Online Chat



Online chat available on
our website.

3 Ring Service



All calls answered in three
rings or less! You can talk
to a real person and get
the help you need.

One Hour Quote



Time is money!
You need a fast
response on quotes.
That's why at
STOBBER all quotes
are completed in
one hour.



3 WAY After Sale Service

5 Day Factory Service

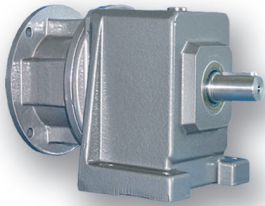
Field Service

Training Support

- Conduct plant surveys to consolidate shaft sizes and ratios and optimize your store room
- Consultative product support team
- On-site installation training
- Email product support at tecsupport@stober.com

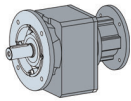
Corrosion Resistant and Food Duty

"C" Series Concentric Helical Solid Shaft

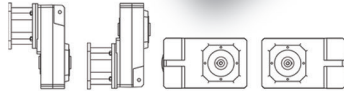


Also available:

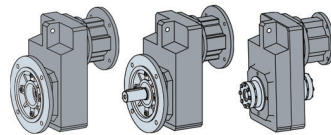
Flange Output



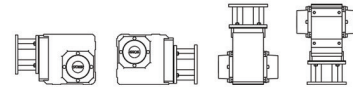
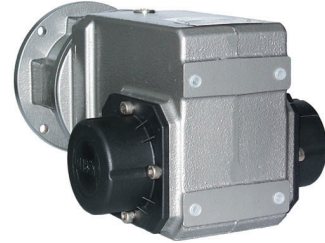
"F" Series Offset Helical Hollow Output Bushing Solid Shaft Output



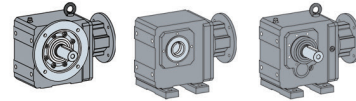
Flange Output, Hollow or Solid Shaft
Single or Double Side Bushing



"K" Series Right Angle Helical/Bevel Hollow Output Solid Shaft Output Double Side Wobble Free Bushing



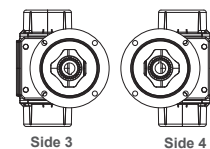
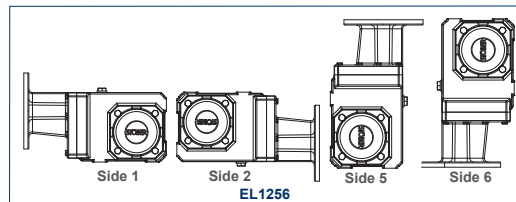
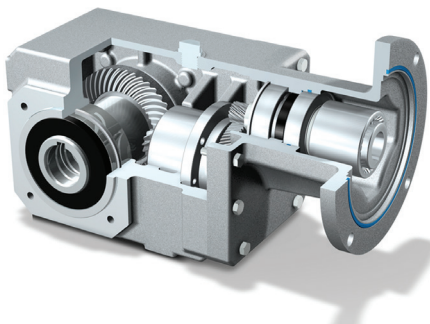
Flange Output, Hollow or Solid Shaft
Foot Mount, Hollow or Solid Shaft



- Lubricated for Life – Double Output Seals
 - Maintenance Free – No Breather – Mounts in **ANY** Horizontal Output Position
 - Stainless Output Bushing, Shaft, or Bore
- Patented (U.S. Patent Number 5,496,127) Stainless Steel Double Sided Bushing Mounted into Stainless Steel Output Quill easily mounts onto standard cold finished, ground, or stainless shafting.
- Output Covers Included with Double Bushings – protects seals from high pressure washing
 - Inside Split Cover Cap – enables easy assembly onto the shaft
 - Output Covers Optional with Single Bushing and Quills
 - ALL Stainless Steel Hardware
- 3 Year Warranty with 5 Year Long Life Option
 - Long Life features: Improved Input Design, SHC630 Synthetic Oil, Application specific mounting position
 - Multilayer Industrial 316 Stainless Steel Epoxy Coating



"KSS" Stainless Steel Series



Silver Bullet AM™ is a registered trademark of Burke Industrial Coatings.



STÖBER Geared to a higher standard™



TRIALON TEST REPORT



90°
60°
30°
0°
10 - 15 cm



Value	pH	Substance
-1.8		Hydrochloric Acid
0.5		Batteries
1		Tomato Juice
1.5 - 2.8		Gastric & Citric Acid
2.4		Lemon Juice
2.5		Cola
2.9		Vinegar, Wine
3.5		Apples, Orange Juice
4.5		Beer
5		Coffee
5.5		Tea
6.5		Milk
7		Pure Water
6.5 - 7.5		Human Saliva & Blood
7.7 - 8.3		Sea Water
8.8 - 10.8		Detergent & Soap
11.5		Ammonia
12.5		Chlorine
13.5		Lye
14		Caustic Soda

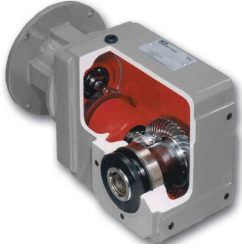
Acidic ↑
↓ Alkaline

IP69K Certified



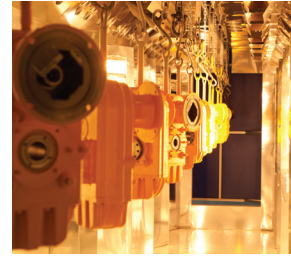
Coating Options – Understand the Difference

STOBER can meet your needs in any of these areas.



Standard – Dry Areas

- Non-plated hardware
- **Not Suitable** for washdown applications
- Gloss gray finish



Paint curing oven allows for higher paint durability and one day assembly.

Corrosion Resistant Duty – Moderately Wet Areas

- Stainless Steel Hardware – Plastic Covers
- Suitable for **Moderate** washdown applications
- Multilayered 316 Stainless Steel Pigmented Finish
- **IP69K Option**



Food Duty – Severely Wet Areas

- Stainless Steel Hardware – Plastic Covers
- Suitable for the **Most Severe** washdown applications
- Multilayered 316 Stainless Steel Pigmented Finish
- Antimicrobial clear top coat
- USDA Compliant
- **IP69K Option**

Stainless Steel – Extremely Harsh Areas

- Stainless Steel Hardware – Plastic Covers
- Suitable for the **Harshest** washdown applications
- Electropolished
- USDA Compliant
- **IP69K Option**



IP69K



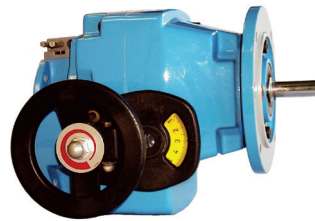
STOBER Geared to a higher standard™

ComTrac® – Speed Control Made Simple!

Series “0F” – Non geared – Flange Mount

Series 0F allows the use of C-face input and output letting you add a reducer that meets your performance, configuration, and maintenance needs.

- $\frac{1}{2}$ to 10 HP
- Output torques up to 496 in. lbs.
- Output speeds from 2180 to 311 RPM
- Ratios from 5:1 to 7:1
- NEMA C-face input — 56C thru 213/215TC

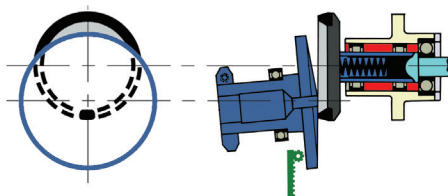


Series “0F” units mounted to MGS speed reducers will provide a wide variety of mounting and output configurations. Ask your STOBBER representative for information.

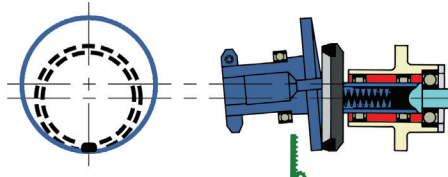


Simple Operation

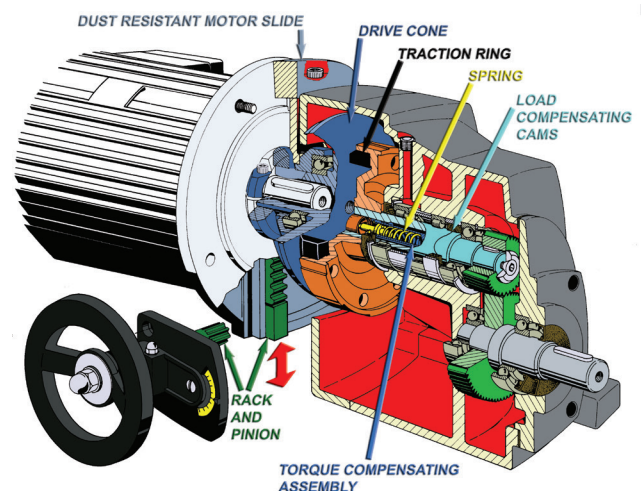
- Easily operated and serviced by semi-skilled personnel.
- Speed control made simple: Turn the handwheel — pinion moves the rack on the motor slide — up or down.



Minimum speed — motor slide down.



Maximum speed — motor slide up.



ServoFit® Gearheads

P and PA



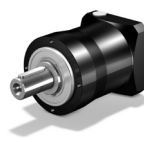
PH and PHA



PHQ and PHQA



PE



C



F



INLINE AND OFFSET

Product	P	PA	PH	PHA	PHQ	PHQA	PE	C	F
Typical Industries									
Packaging	✓						✓	✓	✓
Machine Tool	✓	✓	✓	✓	✓	✓			✓
Robotics	✓	✓	✓	✓	✓	✓			
Material Handling	✓		✓				✓	✓	✓
Semiconductor	✓		✓					✓	✓
Printing	✓	✓		✓		✓			
Converting	✓	✓	✓	✓	✓	✓		✓	
Food Processing	✓							✓	✓

Nominal Output Torque Ranges – NM (In-lbs)

0-50 (0-450)	✓	✓	✓	✓			✓	✓	✓
50-200 (450-1,770)	✓	✓	✓	✓			✓	✓	✓
200-1,000 (1,770-8,850)	✓	✓	✓	✓	✓	✓		✓	✓
1,000-5,000 (8,850-45,000)	✓	✓	✓	✓	✓	✓		✓	✓
5,000-10,000 (45,000-88,500)			✓		✓	✓		✓	✓
10,000-23,000 (88,500-203,000)					✓	✓			

PKX



PK



PHKX



PHK



PHQK



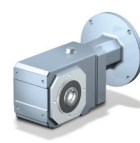
K



KL



KSS



KS



HOLLOW AND RIGHT ANGLE

Product	PKX	PK	PHKX	PHK	PHQK	K	KL	KSS	KS
Typical Industries									
Packaging	✓	✓	✓	✓		✓	✓	✓	✓
Machine Tool	✓	✓	✓	✓	✓	✓			✓
Robotics	✓		✓						✓
Material Handling	✓	✓	✓	✓	✓	✓	✓	✓	✓
Semiconductor			✓						✓
Printing		✓		✓					✓
Converting	✓	✓	✓	✓		✓	✓		
Food Processing	✓	✓				✓	✓	✓	

Nominal Output Torque Ranges – NM (In-lbs)

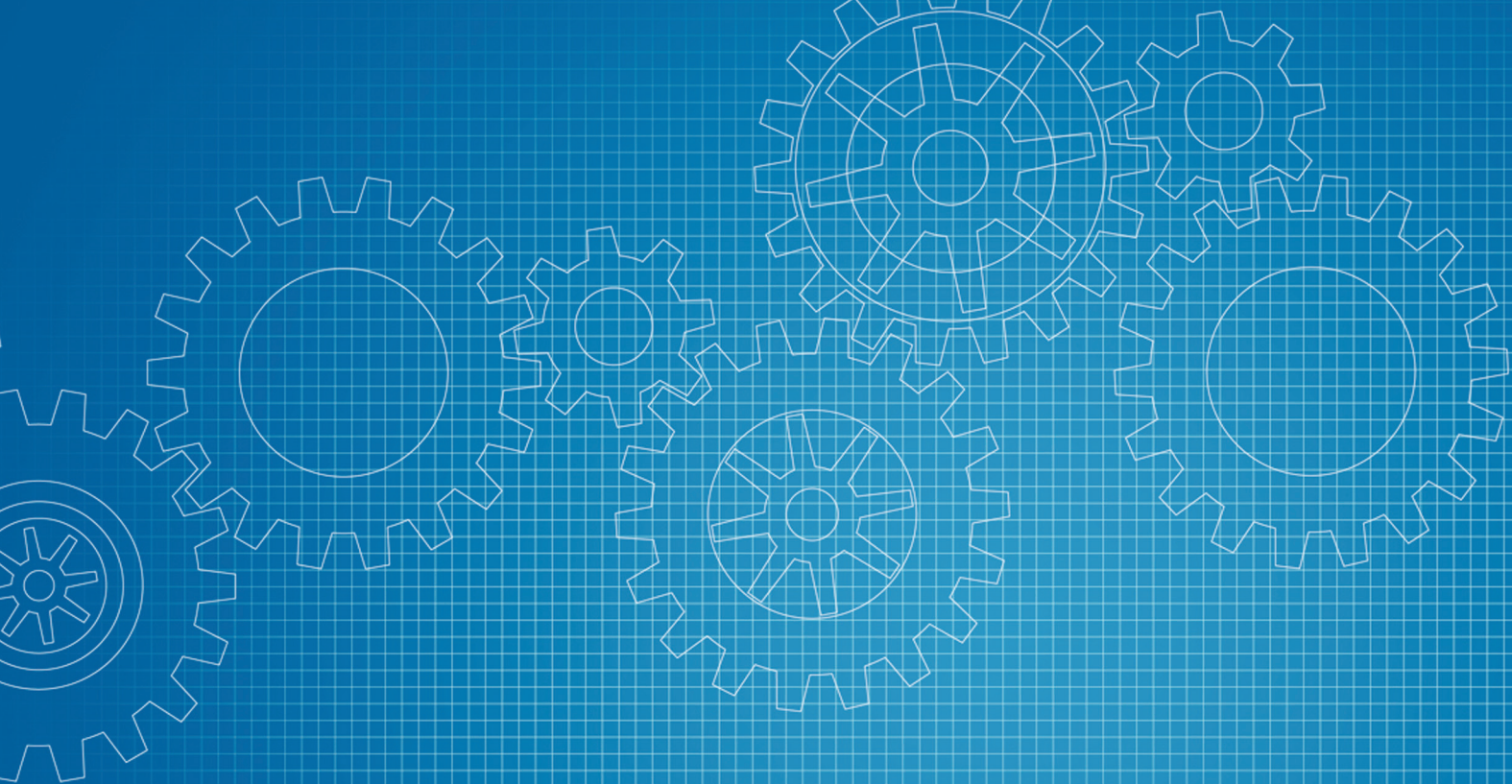
0-50 (0-450)	✓		✓		✓	✓	✓		
50-200 (450-1,770)	✓		✓		✓	✓		✓	✓
200-1,000 (1,770-8,850)	✓	✓	✓	✓	✓	✓		✓	✓
1,000-5,000 (8,850-45,000)	✓	✓	✓	✓	✓	✓			
5,000-10,000 (45,000-88,500)			✓		✓	✓			
10,000-23,000 (88,500-203,000)					✓	✓			





Branches around the world!

- Austria
- China
- France
- Germany
- Italy
- Japan
- Switzerland
- Taiwan
- Turkey
- United Kingdom
- United States



ServoFit, MGS, STOBBER, and ComTrac are registered trademarks of STOBBER Drives Inc.
1781 Downing Drive, Maysville KY 41056
Phone: 606 759-5090, Fax: 606 759-5045
Web: www.stober.com, E-mail: sales@stober.com

Form No. 442931, Copyright Version 25, Printed in the U.S.A.