

See everything at a glance

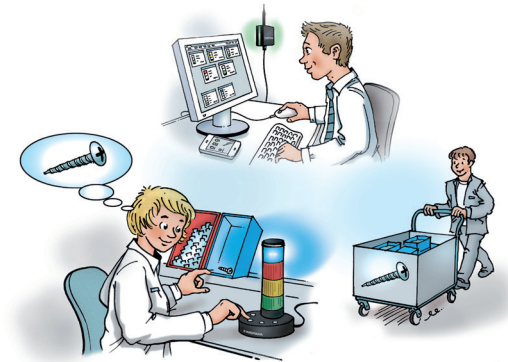
FROM WERMA STACK LIGHT TO A WIRELESS MACHINE MONITORING SYSTEM

Your Path to Lean Production: Identify – Visualize – Rectify



Modular stack lights can be easily retrofitted with WIN transmitters to transmit status information of machines and secondary workplaces to a central place for analyzing purposes.

HOW TO and KEY BENEFITS



- ✓ Wirelessly monitor production machines and secondary workplaces
- ✓ License-free software
- ✓ Easy to retrofit machines of various age and manufacturer
- ✓ Obtain transparency and a central overview
- ✓ Monitor productivity, efficiency and downtime of production equipment
- ✓ Real-time view and E-Mail notifications for faster response
- ✓ Easy to create reports from the SQL database to assist with future planning and investment
- ✓ Low-cost solution and simple to install compared to SCADA

Contact us for an on-site demonstration