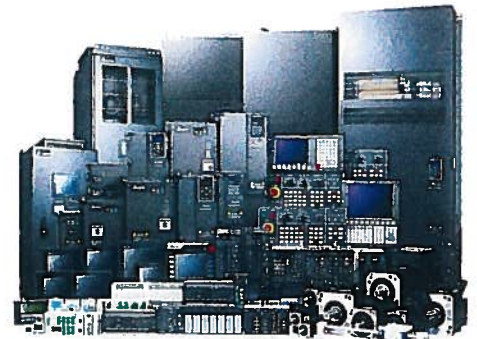


# Industrial Automation Technology

## Delta Corporate Quick Facts

- Establish 1971 in Taiwan
- \$7.52 billion annual revenue in 2014
- 70k employees worldwide
- Innovative Design & Quality Manufacturing competency
- #1 Global Power Supply Manufacturer
- #1 Thermal Management Solution Provider
- Delta Industrial Automation established in 1995
- Delta Products Corporation is well established in USA since 1982 with 6 US based R&D labs, Regional Application Engineering Support and Multiple Stocking Locations



**As a leading industrial automation brand, Delta continuously develops innovative products, systems and solutions with quality, reliability and excellence to deliver our commitment of providing “Automation for a Changing World”.**

## AC Motor Drives

### General Purpose VFD



**C2000:** NEMA 1 Dual Rated HD/SD V/F, FOC, & Torque Ctrl IM/PM Motor up to 600Hz Fully integrated 10k step PLC STO Safety (SIL 2/SILCL 2) Intelligent LCD Keypad 3 slots for Fieldbus, I/O & PG option cards 230 & 480VAC 0.75-450kW, 1-600 HP



**600/690VAC:** 600V at 1.5-15kW, 2-20HP 690V at 18.5-560kW, 25-750HP

**CP2000:** NEMA 1 Fan & Pump CT/VT control same functions as C2000 Cascade & Circulatory pump control 230 & 480VAC 0.75-500kW, 1-670 HP

### Compact / Micro VFD



**VFD-E:** IP20 Micro V/F & SVC control IM motor Fully integrated 500 step PLC Zero stack Optional Keypad One slot for Fieldbus or I/O option 110, 230 & 480VAC 0.25-30 HP



**VFD-EL:** IP20 Micro V/F IM motor Built-in RS-485 Modbus, EMI filter & LED Keypad 110, 230 & 480VAC 0.25-5 HP

### Standard VFD Enclosure



#### NEMA3R Pump Panel

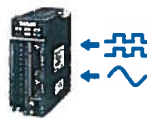
C2000 installed in outdoor rated panel with control and power components door mounted keypad up to 150 HP fused disconnect UL rated

## Motion



### Servo System

**A2-M, A2-E:** Intelligent servo drive Built-in Motion Macros for stand-alone motion 2nd Closed loop Auto-ID motor INC or ABS motor Antivibration On-board I/O ECAT & CANopen 230 & 480VAC 50W-15kW



**B2:** Value-Line analog & Pulse control servo drive 60W regen resistor built-in 160kppr INC resolution Multi-drop RS-485 230VAC 100W-3kW



**ECMA:** 1.28Mppr INC & 160kppr ABS encoder 10 pole rotor spring bound shaft seal IP65 50W-15kW

## Power Quality



**REG2000:** Power Regen Unit 230 & 460VAC 7.5kW-55kW Replaces traditional REGEN resistor by connecting DC bus of VFD or Servo Drive to regen back to the AC line



**AFE2000:** Active Front End 100% Regen duty cycle Unity Power Factor correction @ 100% load Improves to <5% Harmonic Distortion Meets IEEE519 230 & 480VAC 7.5-75kW

## Control



### HMI

**DOP-W:** Large size TFT touch screen 10.1"-15" Aluminum hardened bezel 1GHz processor 256M ROM memory Video playback 2 built-in Ethernet ports



**DOP-B:** 4.3"-10.4" TFT touch screen SD card or USB program load Wide range of PLC drivers Excellent memory & speed



**TP04P/TP70P:** Economy level HMI with built-in PLC & I/O 4 line text panel 7" touch screen models

### PLC & Motion



**AH500:** Scalable Rack-based mid-range PLC Expandable local & remote I/O up to 133k with multi-racks Hot swappable Expandable networks Dual Core processor IEC61131-3 Programming software



**DVP-ES2/EX2:** Industry Standard Micro Brick PLC Expandable to 512 I/O and Networks 110-220VAC Powered Screw Terminals



**DVP-SS2/SA2/SE/SV2:** Slim Style Modular rack-less PLC 24VDC powered Expandable to 512 I/O and networks Removable terminal blocks



**20PM:** Pulse output Motion Controller and PLC integrated 2-3 Axis versions with encoder feedback and handwheel input PLCopen function blocks and G-Code

### Industrial Network



**IFD:** Network converter module Modbus serial DeviceNet CANopen Modbus TCP EtherNet/IP USB Converters

**RTU:** Network coupler modules for remote I/O Ethernet Modbus TCP Profibus DeviceNet RS485 Modbus EtherCAT



### Industrial Ethernet Switch

**DVS:** Managed and Unmanaged 5, 8 & 16 port Wifi Units compatible with E/IP Profinet EtherCAT CClink IE and DNP 3.0

**Create a complete BOM using the On-Line Product Selection Tool –**  
[www.deltaPST.com](http://www.deltaPST.com)

Please leave your contact information here -

## Field Device

### Temperature Controllers



**DTB:** 1/32-1/4 DIN frame Thermocouple RTD & Analog input Relay, Voltage, Current & Analog output Dual Loop control Programmable Ramp and Soak 4 PID's RS485 standard 100-240VAC or 24VDC



**DTC:** DIN rail mount Stackable up to 8 inputs Thermocouple RTD & Analog input Relay, Voltage, Current & Analog output Dual Loop control Programmable Ramp and Soak 4 PID's RS485 standard 24VDC

### Counter / Timer / Tachometer



**CTA:** 3 in 1 device 1/16 DIN 10Kcps counter 1&2 stage batch, total counting 2 outputs PNP, NPN Two line LCD display 100-240VAC or 24VDC

### Pressure Sensors



**DPA:** 3 color dual line display M5 or NPT input Analog & NPN or PNP output Copy Function Face or Bracket Mount 24VDC

### Power Supply



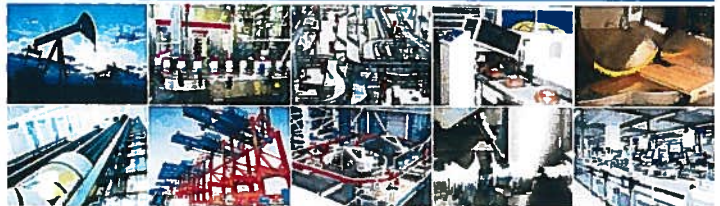
**DVP:** Din rail mount for DVP PLC 24VDC 24W/48W/120W 120-240VAC 1ph input



**DRP:** DIN Rail & Panel Mount 5VDC 15W-50W 12VDC 15-100W 24VDC 35W-960W Class 2 110/230VAC & 480VAC

**PMC:** Cost efficient panel mount power supply

## Focus Industries & Markets



- Oil / Gas
- Food & Beverage
- Material Handling
- Packaging
- Machine Tool
- Woodworking
- Elevator
- Cranes & Hoists
- HVAC Fluid
- Industrial Robot

Contact us -

**Delta Products Corporation (USA)**  
**Raleigh Office**

P.O. Box 12173, 5101 Davis Drive, Research Triangle Park, NC 27709, U.S.A.

**E-Mail:** [customerservice.ia@delta-corp.com](mailto:customerservice.ia@delta-corp.com)

**TEL:** 1-919-767-3813

**FAX:** 1-919-767-3969

**Website:** [www.Delta-Americas.com](http://www.Delta-Americas.com)

