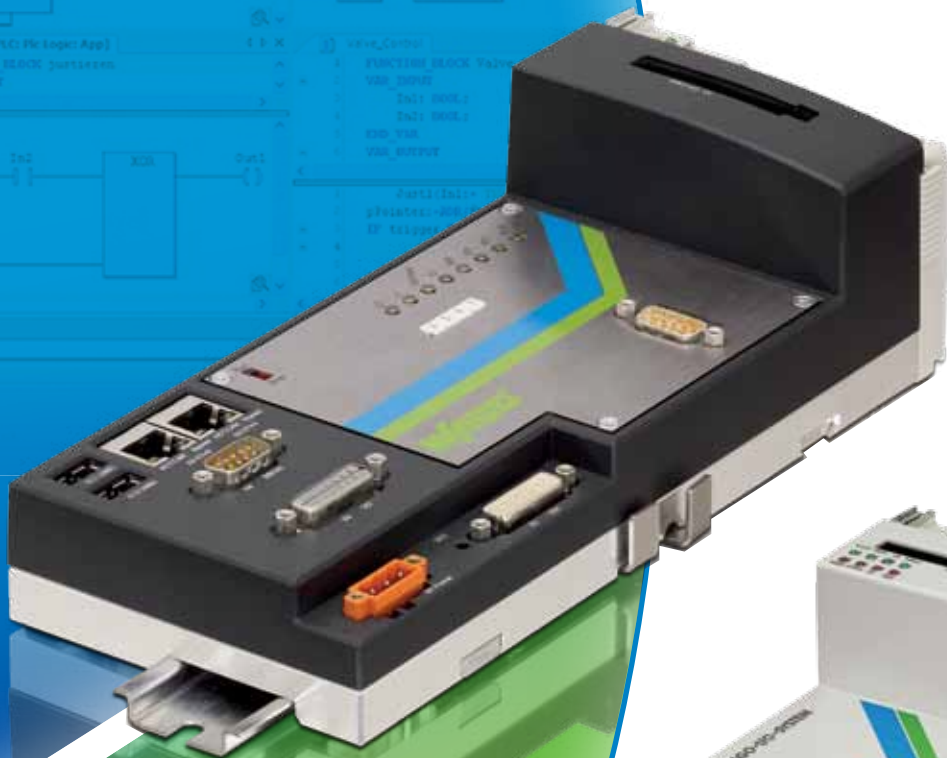


WAGO-I/O-IPC

PC Performance in the Field



WAGO[®]
INNOVATIVE CONNECTIONS

PC Performance in the Field

Flexible and scalable system design:

Industrial PC controller for the WAGO-I/O-SYSTEM

The decentralization of industrial automation solutions requires that increasingly intelligent devices be used as part of your long term control strategy. The 758 Series WAGO-I/O-IPC uses embedded PC technology to seamlessly tie the industrial automation (PLC) and IT (PC) worlds together. Now, decentralized control, connection to popular fieldbuses, as well as recording, analyzing, and measuring data can be accomplished easily, with large amounts of data and in short time periods.

Whether using the universal IEC 61131-3 soft PLC programming tool, WAGO-I/O-PRO or application specific software, the IPC provides a powerful platform for any application and ensures the long term integrity of your automation and control strategy.



Universal and Flexible

- Control, monitor and visualize directly from the fieldbus node
- PLC + IT functions all in one device
- Direct connection of over 400 I/O and specialty modules from the WAGO-I/O-SYSTEM 750/753

Industrial Strength

- Minimal space requirement
- Non-volatile memory
- Real-time clock

Tough

- Passive cooling without fans
- Non rotating data storage - static



Scalable

- Various CPU performance outputs from Geode to Pentium® M 1.4 GHz
- Open system with Linux® 2.6
- Optional PLC functionality with CoDeSys 2.3 and integrated visualization via Web browser or direct monitor connection

Interfaces

- 2 x Independent ETHERNET
- 2 x USB
- RS-232
- DVI-I (Panel Link, VGA)
- Compact Flash Interface

Fieldbus Interfaces

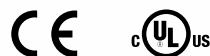
- PROFIBUS DP (Master/Slave)
- CANopen (Master)
- MODBUS/TCP/UDP



MODBUS/TCP

CANopen

Approvals



Ethernet

- Integrated Web Server
- DHCP, BootP, DNS, SNTP, FTP, TELNET, HTTP
- MODBUS/TCP/UDP, MODBUS RTU
- Configuration via Web-Based Management

Flexibility Through Open Standard Software

Linux® 2.6 with RT-Preempt Patch (Real-Time)

- Based on a current, standard Linux® Version 2.6
- Free open-source operating system
- Program development in high-level languages (e.g., C/C++, Java) possible
- Can be configured using mainstream WAGO tools (e.g. I/O Check, ETHERNET settings)
- Stable operating system
- Deterministic scan times
- Multitasking

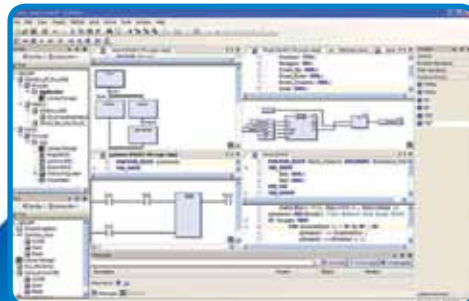
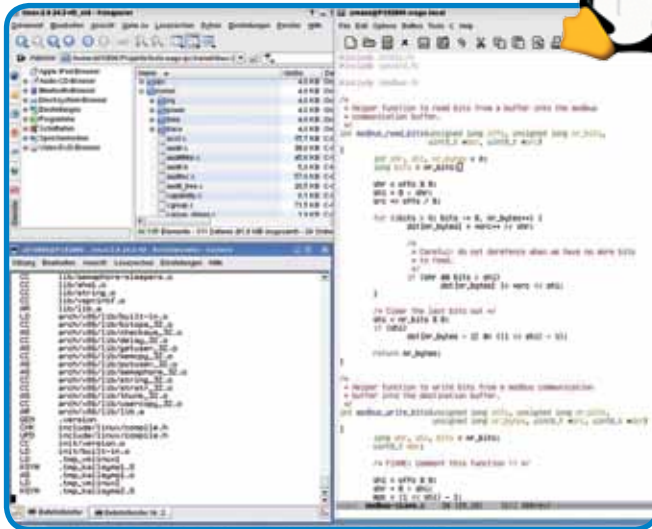


CoDeSys Automation Alliance

- Programming in 5 IEC languages
- Open interfaces (OPC, DDE)
- Offline simulation
- Alarm routine
- Fieldbus configuration (MODBUS/TCP, PROFIBUS, CANopen)
- Watch formula, tracing, logging, etc.

Visualization Flexibilities

- Full integration into CoDeSys
- Online visualization within CoDeSys
- Connection via DVI port of WAGO-I/O-IPC
- Integrated web server



Onboard Compact Flash

- Back/restore files
- Data storage



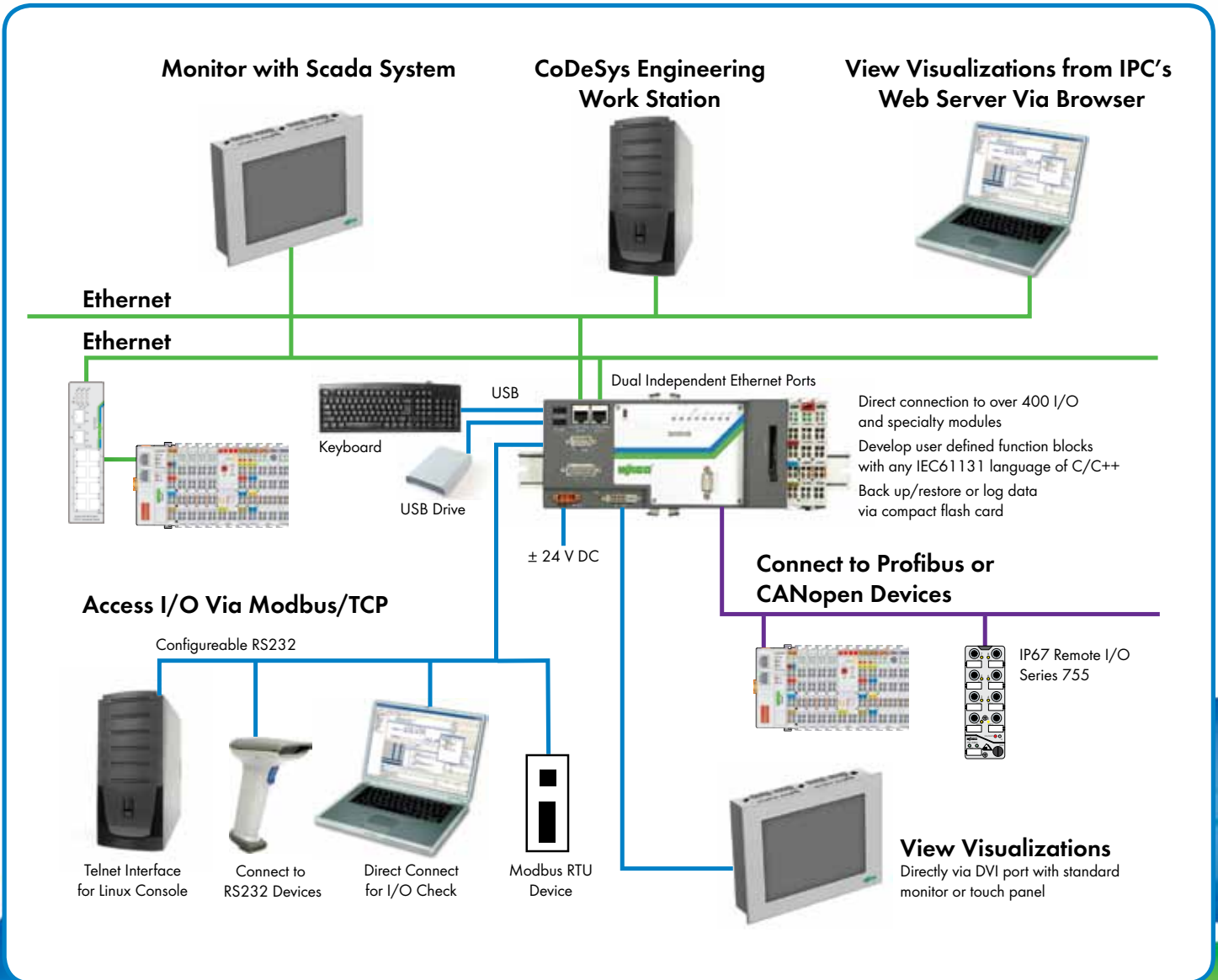
Technical Data

Properties	I/O-IPC-G2	I/O-IPC-C6	I/O-IPC-C10 E	I/O-IPC-P14
Processor	Geode SC 1200	Celeron®	Celeron®	Pentium® M
CPU Speed	266 MHz	600 MHz	1 GHz	1,4 GHz
Main Memory (RAM)	128 MB	256 MB	256 MB	256 MB
Internal Memory (Flash)	128 MB	512 MB	512 MB	512 MB
Retain Memory	128 kB	1024 kB	1024 kB	1024 kB
Battery for RTC, SRAM	CR 2032	CR 2025	CR 2025	CR 2025
CF-Card Interface	Socket type I+II	Socket type I+II	Socket type I+II	Socket type I+II
Status LED	8	8 (tri-color)	8 (tri-color)	8 (tri-color)
USB	1.1	2.0	2.0	2.0
RS 232	1	1	1	1
DVI (VGA via adapter)	DVI-I	DVI-I	DVI-I	DVI-I
Graphics Resolution (max.)	1024 x 768	1280 x 1024	1280 x 1024	1280 x 1024
Degree of Protection	IP20	IP20	IP20	IP20
Mounting	DIN Rail	DIN Rail	DIN Rail	DIN Rail
Operating Temperature	0°C - +55°C	0°C - +55°C	-20°C - +60°C	0°C - +55°C
Weight	550 g	1100 g	1100 g	1100 g
Housing Material	Plastic (cover)	Aluminum	Aluminum	Aluminum
Dimensions (mm) W x H x L	172x65x100	236x70x100	236x70x100	236x70x100

Order Data

Type	Fieldbus	Item No. with Linux 2.6 + CoDeSys + Visu
I/O-IPC-G2	MODBUS TCP/UDP	758-0870/0000-0110
	MODBUS TCP/UDP + PROFIBUS DP Master	758-0870/0000-0111
	MODBUS TCP/UDP + CANopen Master	758-0870/0000-0112
	MODBUS TCP/UDP + PROFIBUS DP Slave	758-0870/0000-0114
I/O-IPC-C6	MODBUS TCP/UDP	758-0874/0000-0110
	MODBUS TCP/UDP + PROFIBUS DP Master	758-0874/0000-0111
	MODBUS TCP/UDP + CANopen Master	758-0874/0000-0112
I/O-IPC-C10 E	MODBUS TCP/UDP	758-0875/0000-0110
	MODBUS TCP/UDP + PROFIBUS Master	758-0875/0000-0111
	MODBUS TCP/UDP + CANopen Master	758-0875/0000-0112
I/O-IPC-P14	MODBUS TCP/UDP	758-0876/0000-0110
	MODBUS TCP/UDP + PROFIBUS Master	758-0876/0000-0111
	MODBUS TCP/UDP + CANopen Master	758-0876/0000-0112

Highlights at a Glance



750-875 Series for Harsh Environments



-20° to +60°C
Operating Temperature



Marine Approvals

Application Area

The I/O IPC is the ideal embedded-PC platform for machine-oriented use in the industrial environment for:

- Measurement and control tasks
- Operating and visualization tasks
- Data capture and data processing
- Communication gateway, Web server



System Features

- PLC and IT functionality in one device
- Fieldbus diversity
- Minimal space requirement
- Visulation and web server onboard
- Long-term system availability
- High return on investment
- Mutiple programming options



Examples of Use

- Robotics
- Printing machines
- Automatic placement machines
- Machine tools
- Brake test stands
- Ink mixers
- Wind power stations
- Injection molding machines
- Process Control
- Information terminals
- Large image viewers
- Vending machines
- Facility management
- Storage systems
- IT communication

WAGO Service Worldwide

Germany

WAGO Kontakttechnik
Minden
Tel. ++49/571/887/0
Fax ++49/571/887/169

Austria

WAGO Kontakttechnik
Wien
Tel. ++43/1/615/07/80
Fax ++43/1/615/07/75

Belgium

WAGO Kontakttechnik
Zaventem
Tel. ++32/2/7/17/90/90
Fax ++32/2/7/17/90/99

China

WAGO ELECTRONIC Co. Ltd.
Tianjin
Tel ++86/22/59617688
Fax ++86/22/59617668

England

WAGO, Ltd.
Rugby
Tel. ++44/1788/568008
Fax ++44/1788/568050

France

WAGO CONTACT S.A.
Paris
Tel. ++33/148172590
Fax ++33/148632520

Italy

WAGO ELETTRONICA SRL
Casalecchio di Reno (BO)
Tel. ++39/051/6132112
Fax ++39/051/6272174

Japan

WAGO Co. of JAPAN Ltd.
Tokyo
Tel. ++81/3/5627/2050
Fax ++81/3/5627/2055

Poland

WAGO ELWAG sp. z o. o.
Wroclaw
Tel. ++48/71/3604670/78
Fax ++48/71/3604699

Singapore

WAGO Electronic Pte. Ltd.
Singapore
Tel. ++65/62866776
Fax ++65/62842425

Switzerland

WAGO CONTACT SA
Domdidier
Tel. ++41/26/676/75/86
Fax ++65/26/676/75/01

Mexico

WAGO Corporation
Queretaro
Tel. 001/800/309/5975
+ 52/442/221/5946
Fax + 52/442/221/5063

Canada

WAGO Corporation
Tel. 800/DIN Rail (346-7245)
Fax 262/255-3232

WAGO Corporation
N120 W19129 Freistadt Road
Germantown, Wisconsin 53022
800 / DIN Rail (346-7245)
Fax 262 / 255-3232
info.us@wago.com
www.wago.us

