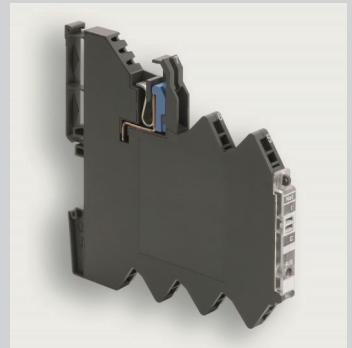


LUTZE LOCC-Box Intelligent Control Circuit Protection

LUTZE LOCC-Box is an innovative control circuit protection device utilizing state-of-the-art “Solid State Technology” for short circuit and overload situations in 12/24/48V DC control circuits. LOCC-Box’s technology eliminates the mechanical operation of a circuit breaker or the inefficiencies of a fuse.

- Adjustable current range (1-10A)
- Adjustable characteristics: fast, medium, slow 1, slow 2, slow 3
- Output alarm signal at 90% of load setting
- Output trip alarm
- LED status indicator on/off/alarm
- Remote reset and remote on/off
- Independent of ambient temperature, no derating required
- Din rail mountable
- Gateway communication capabilities for remote monitoring (optional)
- UL Listed



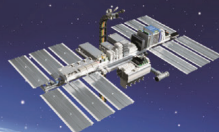
LUTZE Inc.
13330 South Ridge Drive
Charlotte, North Carolina 28273

1-800-447-2371
info@lutze.com
www.lutze.com

LUTZE 
SYSTEMATIC TECHNOLOGY

Efficiency in Automation

Cable • Connectivity • Cabinet • Control



Modular, Flexible and Accurate - LOCC-Box LUTZE Overload Current Control Device

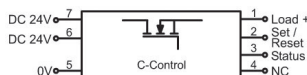
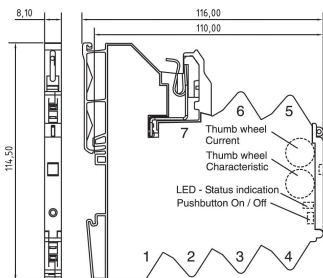
Part Number	Input Voltage	Max Output Current	Number of Characteristics	Number of Output Alarms	NEC Class 2	Gateway Option
716400	10-30 DC V	10A	5	2		
716401	10-30 DC V	10A	5	3		
716406	39-58 DC V	6A	5	3		
716408	10-30 DC V	5A	3	3		
716409	10-32 DC V	2A	3	3		
716410	10-30 DC V	10A	5	3		X
716413	11-30 DC V	5A	3	3	X	
716414	11-30 DC V	5A	3	3	X	X
716418	10-30 DC V	5A	3	3		X

LOCC-Box units with NEC Class 2 approval comply with Class 2 circuit design. LOCC-Box units with the optional Gateway feature allow for remote monitoring and data analysis.

LOCC-Pads software offers the possibility for custom parameter setting, data analysis and diagnostics. These are just some of the intelligent features of the LUTZE LOCC-Box.

We invite you to learn more about how to integrate it into your control system.

Sample Dimensions and PIN Assignments for LOCC-Box #716400/1



- 1: + Output
- 2: Control input (Set/Reset)
- 3: Status output
- 4: NC
- 5: 0V
- 6: + Supply (alternative)
- 7: + Supply

LUTZE Inc.
13330 South Ridge Drive
Charlotte, North Carolina 28273

1-800-447-2371
info@lutze.com
www.lutze.com

