

CONVENIENT POTENTIAL DISTRIBUTION

POWER DISTRIBUTION MODULES

The new compact WAGO PDM Series allows convenient potential distribution for power supply applications. Reducing installation time and inventory... one module replaces the use of multiple terminal blocks and accessories. Modules are available in single or double potential, a variety of output configurations, lever option on the input, and more.

- Pre-configured modules reduce installation time and inventory
- Extra input terminals for convenient daisy chaining to additional modules
- Levered terminals for easy wiring of inputs/outputs
- Fused output version eliminates the need for additional fuse terminal blocks
- Clear marking to identify common and power connections

www.wago.us/pdm



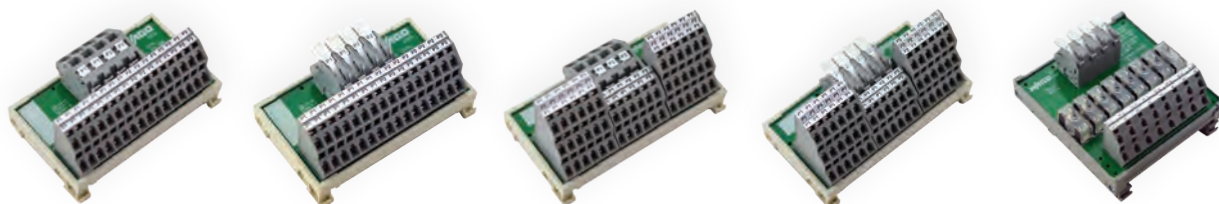
POWER DISTRIBUTION MODULES (PDM)



Part No.	830-800/000-302	830-800/000-302/000-006	830-800/000-312	830-800/000-303	830-800/000-313
Description	Single potential power distribution module, gray, 6 outputs, 1 input	Single potential power distribution module, blue, 6 outputs, 1 input	Single potential power distribution module, gray, 6 outputs, 1 input (lever)	Single potential power distribution module, gray, 9 outputs, 1 input	Single potential power distribution module, gray, 9 outputs, 1 input (lever)
Operating Voltage	250 VAC/VDC	250 VAC/VDC	250 VAC/VDC	250 VAC/VDC	250 VAC/VDC
Maximum Input Current	65 A	65 A	65 A	65 A	65 A
Maximum Load/Output	12 A	12 A	12 A	10 A	10 A
Input/Wire Range	24 - 6 AWG	24 - 6 AWG	16 - 6 AWG	24 - 6 AWG	16 - 6 AWG
Output Wire Range	28 - 12 AWG	28 - 12 AWG	28 - 12 AWG	28 - 12 AWG	28 - 12 AWG



Part No.	830-800/000-314	830-800/000-305	830-800/000-315	830-800/000-306	830-800/000-316
Description	Single potential power distribution module, gray, 10 outputs, 2 inputs (lever), daisy chain	Double potential power distribution module, gray, 8 outputs/potential, 2 inputs/potential daisy chain	Double potential power distribution module, gray, 8 outputs/potential, 2 inputs/potential (lever), daisy chain	Double potential power distribution module, gray, 12 outputs/potential, 2 inputs/potential, daisy chain	Double potential power distribution module, gray, 12 outputs/potential, 2 inputs/potential (lever), daisy chain
Operating Voltage	250 VAC/VDC	250 VAC/VDC	250 VAC/VDC	250 VAC/VDC	250 VAC/VDC
Maximum Input Current	30 A	30 A	30 A	30 A	30 A
Maximum Load/Output	10 A	10 A	10 A	10 A	10 A
Input/Wire Range	20 - 10 AWG	24 - 10 AWG	20 - 10 AWG	24 - 10 AWG	20 - 10 AWG
Output Wire Range	28 - 12 AWG	28 - 12 AWG	28 - 12 AWG	28 - 12 AWG	28 - 12 AWG



Part No.	830-800/000-307	830-800/000-3017	830-800/000-308	830-800/000-318	830-800/000-319
Description	Double potential power distribution module, gray, 16 outputs/potential, 2 inputs/potential, daisy chain	Double potential power distribution module, gray, 16 outputs/potential, 2 inputs/potential (lever), daisy chain	Double potential power distribution module, gray, 24 outputs/potential, 2 inputs/potential, daisy chain	Double potential power distribution module, gray, 24 outputs/potential, 2 inputs/potential (lever), daisy chain	Double potential power distribution module, gray, 8 fused outputs, 8 common terminals, 2 inputs/potential (lever), daisy chain
Operating Voltage	250 VAC/VDC	250 VAC/VDC	250 VAC/VDC	250 VAC/VDC	250 VAC/VDC
Maximum Input Current	30 A	30 A	30 A	30 A	30 A
Maximum Load/Output	10 A	10 A	10 A	10 A	6.3 A
Input/Wire Range	24 - 10 AWG	20 - 10 AWG	24 - 10 AWG	24 - 10 AWG	20 - 10 AWG
Output Wire Range	28 - 12 AWG	28 - 12 AWG	28 - 12 AWG	28 - 12 AWG	28 - 12 AWG

WAGO is a registered trademark of WAGO Verwaltungsgesellschaft mbH.

"Copyright – WAGO Kontakttechnik GmbH & Co. KG – all rights reserved. The content and structure of the WAGO Websites, catalogs, videos, and other WAGO media are subject to copyright. The dissemination or changing of the content of these pages and videos is not permitted. Furthermore, the content may neither be copied nor made available to third parties for commercial purposes. Also subject to copyright are the images and videos that were made available to WAGO Kontakttechnik GmbH & Co. KG by third parties."