



TOUCH PANEL 600

Aesthetic Design Meets High Performance



ADDED VALUE AT A GLANCE



High Performance

Parallel execution of computing operations with a Cortex A9 Multicore processor providing high operating speed.



Openness

High performance WAGO hardware combined with the future-ready Linux® operating system; for complex tasks, you can choose between programming in IEC 61131 or directly in Linux®.



Codesys

CODESYS 3.5, is used for visualization, programming, offline simulation, configuration of the fieldbuses, recipe management and much more.



Flexible Interface Options

Touch Panel offers three different architectures: Web, Visu and Control, with three levels of device technologies: Advanced, Marine and Standard.



IIoT-Ready

Through the use of a library, the Control panel becomes an IIoT touch controller than can send data from the field level to the cloud.



Cybersecurity

The SSH and SSL/TLS encryption methods are integrated by default for establishing secure HTTPS and FTPS connections. A firewall provides additional protection against unwanted access.



HTML5 Visualization

The use of standardized state-of-the-art technology allows the visualization to be displayed on mobile devices like smartphones and tablets.



Multi-Touch Capability

Devices with capacitive touchscreens allow gesture recognition, e.g., swipe gestures for turning pages or zooming.



Docker Containers

The Control panel supports Docker Containers, providing the ability to run applications in parallel with your logic and visualizations.



Convenient Operation

Sensors can automatically adjust the brightness of the panel based on a room's ambient lighting conditions. The position of the screen setting buttons on the front side allows user-friendly adjustment.



Energy Efficiency

An integrated proximity sensor controls the screen saver and automatically displays the screen when the operator is present. An integrated light sensor detects ambient lighting levels for brightness control.



Anti-Reflective

The black front plate on the marine devices absorbs incident light and prevents reflections.



Maintenance-Free

The Touch Panel has no fan or battery, making it completely maintenance-free.



High Protection Class

With specially developed clamps, the NEMA 4X / IP65 degree of protection can be achieved for the front of the display. This design flexibility makes the panel extremely versatile and suitable for a wide variety of applications.



THREE PRODUCT FAMILIES

Operate, observe, visualize and diagnose in factory, process and marine applications. Touch Panels with various hardware configurations are ideal for small to mid sized control and visualization tasks. Underneath a contemporary design, our Touch Panels pack some of the industry's most powerful technology. It allows users to harmonize the high-tech image of your machines through high quality and high performance visualizations.

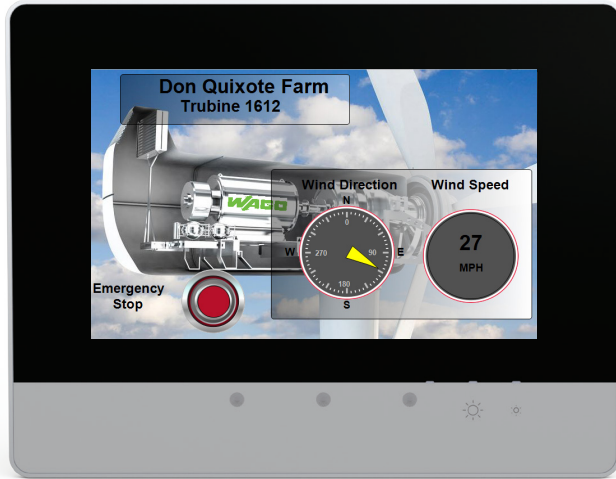
With three different options to choose from, select the best strategy for any application...

Web Panel: Pair with WAGO's web server enabled PLCs for a stylish operator interface.

Visu Panel: Share the control load between the PLC and operator interface.

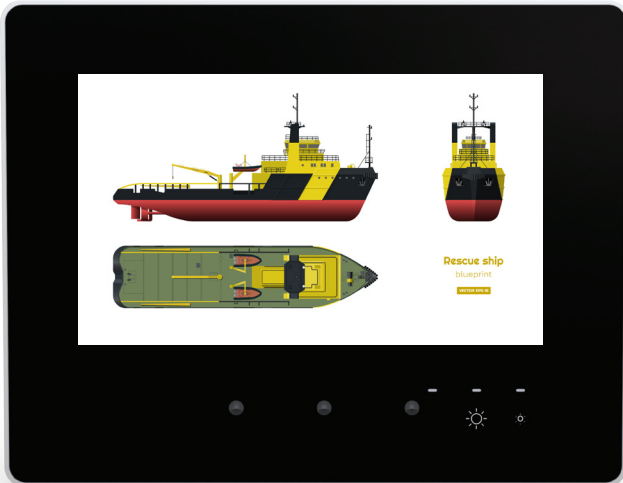
Control Panel: An all-in-one HMI and PLC; a high performance controller with high quality graphic resolution.

THREE PRODUCT STYLES



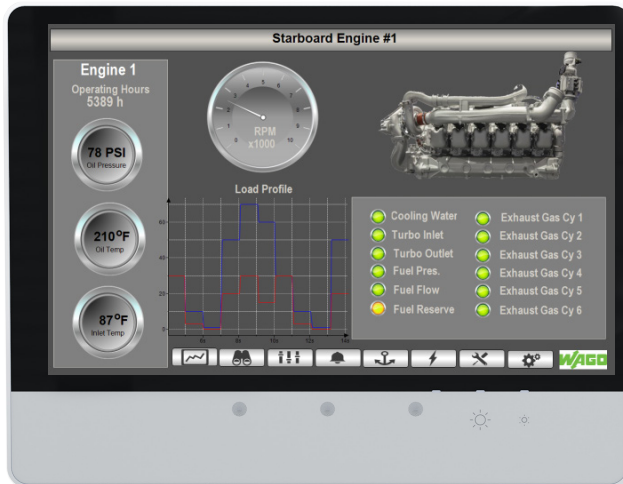
STANDARD LINE

Devices with resistive touch screens for standard control cabinet applications



MARINE LINE

Devices with black matte anti-reflection surfaces and special marine approvals for use in shipboard automation



ADVANCED LINE

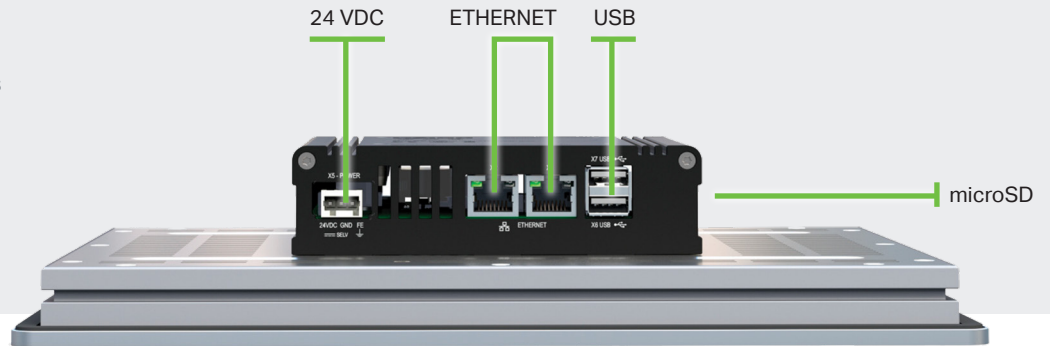
Capacitive multi-touch devices with a glass surface, along with greater mechanical and chemical resistance for more extensive requirements



THREE PORT CONFIGURATIONS

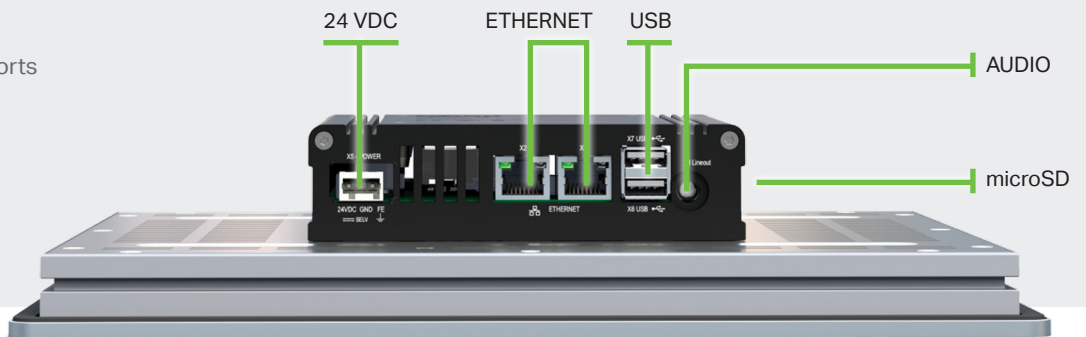
CONFIGURATION PI01

- 2 configurable Ethernet ports
- 2 USB host 2.0
- microSD (max 2 GB) / microSDHC (max 32 GB)



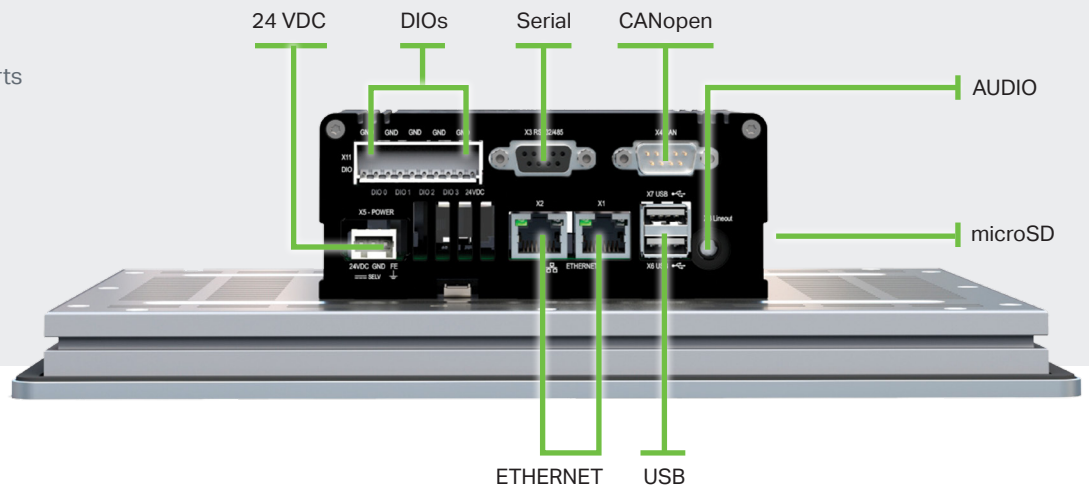
CONFIGURATION PI02

- 2 configurable Ethernet ports
- 2 USB host 2.0
- microSD (max 2 GB) / microSDHC (max 32 GB)
- Audio interface



CONFIGURATION PI03

- 2 configurable Ethernet ports
- 2 USB host 2.0
- Configurable serial
- 4 configurable DIOs
- CANopen
- microSD (max 2 GB) / microSDHC (max 32 GB)
- Audio interface



- PLC and Edge in one device
- Supports Docker Containers
- Fieldbus protocols supported: MODBUS/TCP, CANopen, Ethernet/IP-Adapter
- IIoT-ready (MQTT and OPC UA)
- Licensed options: Sparkplug protocol, BACNet, IEC60870

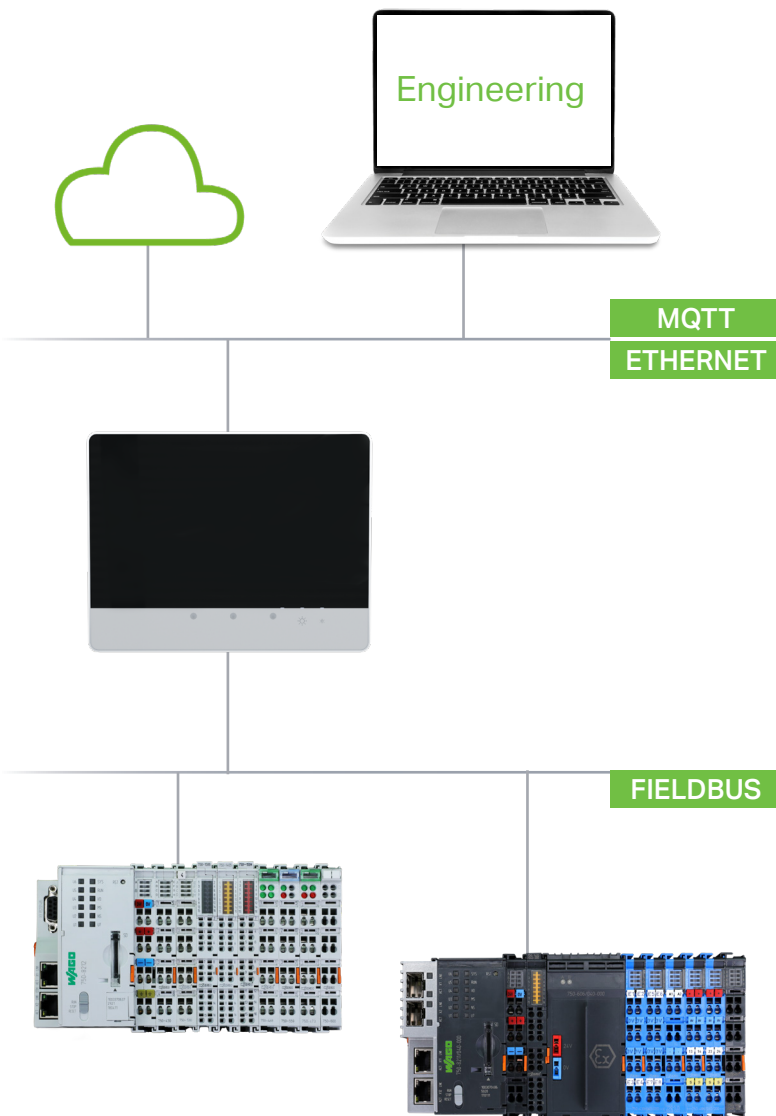


CONTROL PANEL

Control Panels combine the features of a PLC and HMI into a single device, providing a compact footprint for your automation system. CODESYS software is used to develop both the control logic as well as the visualizations; optimizing system development. Leveraging the power of the Touch Panel's quad core processor, the Control Panel is well equipped to offer high performance control as well as impeccable graphic resolution. The integrated web server extends the HTML5 web visualizations to other devices. Take advantage of the controllers' Linux® operating system via Docker Containers to run applications in parallel with your PLC code.

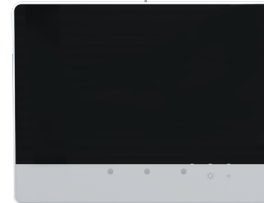
Your IIoT needs are met with the Control Panel's support of MQTT and OPC UA protocols. Easily connect your plant floor data to your preferred Cloud service. Security is offered via TLS encryption plus an onboard Firewall and VPN.

Multiple fieldbus ports onboard support MODBUS /TCP, CANopen, and Ethernet/IP (adapter mode) protocols. An onboard configurable serial port (RS-232/-485) can be used to connect to additional field devices. Use the Control Panel as your gateway between these fieldbuses. In addition, the onboard 4 configurable digital I/O points provide direct input into the controller and can be conveniently wired to commonly used devices.





ETHERNET



- Visualization of fieldbus data
- Offloads the visualization burden from the controller
- Supplementary visualization via integrated web server

VISU PANEL

Visu Panels display dynamic visualizations that are created with e!COCKPIT software and are stored directly in the device's memory. The real-time data is collected from field devices via MODBUS/TCP and network variables. With this architecture, data from multiple PLCs can be aggregated into one operator interface.

The Visu Panel has an integrated web server that can host the graphics to standard commercial mobile devices like tablets or smartphones or even a large screen smart TV, expanding the reach of your control strategy.



WEB PANEL

The WAGO TP600 Web Panel is an industrial web browser with high resolution graphics and touch screen. The Web Panel is optimized to display web pages hosted from WAGO CODESYS 3.5 basic controllers with onboard web servers. The visualizations are stored and hosted by the WAGO controller to be used to monitor and control equipment via an elegant touch screen interface. It is capable of displaying visualizations that are based on state-of-the-art HTML5 technology.

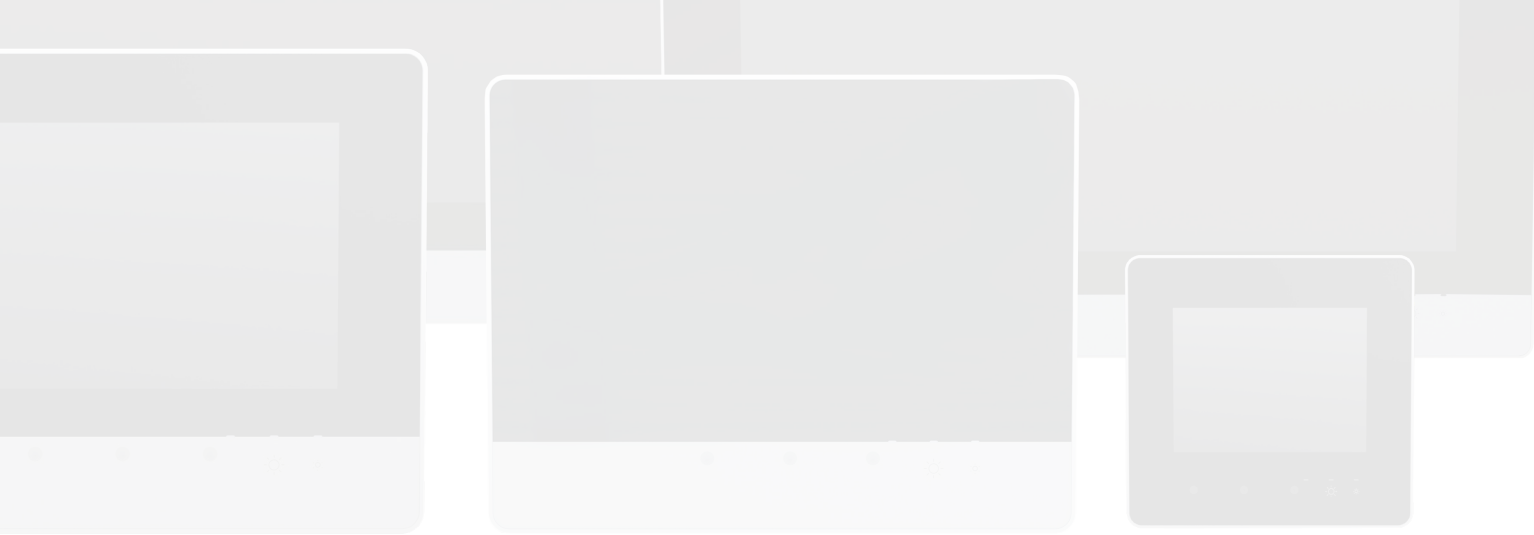
Users can take advantage of the HTML5 technology by displaying the same visualizations on other standard commercial mobile devices like tablets or smartphones.

TECHNOLOGY



Touch Panel 600			
Processor	Multi core Cortex A9	Ethernet Ports	2 (Switched or separated)
RAM Memory	2 GB	Web server	Onboard
Flash Memory	4 GB	Firewall	Integrated
Expansion	MicroSDHC (max 32 GB)	VPN	IPSec / OpenVPN
Programming	Codesys 3.5 for logic and graphic development	Touch Screens	Advanced: Capacitive multi-touch Standard/Marine: Resistive single-touch
Fieldbus	Visu Panel: MODBUS/TCP Control Panel: MODBUS/TCP/RTU, EtherNet/IP, EtherCAT, CANopen	Protection	NEMA 4X / IP65 front (indoor use only), IP20 back
IIoT Protocols	MQTT, OPC UA (Control panel only)	OS	Real-time Linux® with RT-Preempt
Ethernet Protocols	DHCP, DNS, FTP(S), HTTP(S), SSH		

Touch Panel 600 Resolution Information			
Display Size	Display Colors	Aspect Ratio	Graphics Resolution
4.3" (10.9 cm)	16 M	16 : 9	480 x 272
5.7" (14.5 cm)	262 M	4 : 3	640 x 480
7.0" (18 cm)	16 M	16 : 9	800 x 480
10.1" (25.7 cm)	16 M	16 : 9	1280 x 800
15.6" (39.6 cm)	16 M	16 : 9	1920 x 1080
21.5" (54.6 cm)	16 M	16 : 9	1920 x 1080







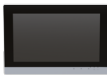
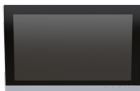
TOUCH PANELS 600

Versions, Hardware Configuration and Functions

STANDARD LINE

Single-Touch



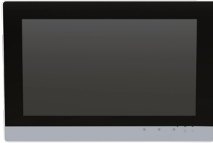
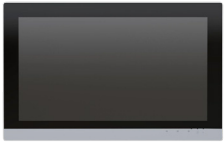
				
Size (inch/cm)	4.3" (10.9 cm)	5.7" (14.5 cm)	7.0" (18 cm)	10.1" (25.7 cm)
Web Panel Part Number Hardware configuration PIO1	762-4101	762-4102	762-4103	762-4104
Visu Panel Part Number Hardware configuration PIO2	762-4201/8000-0001	762-4202/8000-0001	762-4203/8000-0001	762-4204/8000-0001
Control Panel Part Number Hardware configuration PIO3	762-4301/8000-0002	762-4302/8000-0002	762-4303/8000-0002	762-4304/8000-0002

		
Size (inch/cm)	15.6" (39.6 cm)	21.5" (54.6 cm)
Web Panel Part Number Hardware configuration PIO1	762-4105	762-4106
Visu Panel Part Number Hardware configuration PIO2	762-4205/8000-001	762-4206/8000-001
Control Panel Part Number Hardware configuration PIO3	762-4305/8000-002	762-4306/8000-002

MARINE LINE
Single-Touch

				
Size (inch/cm)	4.3" (10.9 cm)	5.7" (14.5 cm)	7.0" (18 cm)	10.1" (25.7 cm)
Visu Panel Part Number Hardware configuration PIO2	762-6201/8000-0001	762-6202/8000-0001	762-6203/8000-0001	762-6204/8000-0001

ADVANCED LINE
Multi-Touch Capability

				
Size (inch/cm)	7.0" (18 cm)	10.1" (25.7 cm)	15.6" (39.6 cm)	21.5" (54.6 cm)
Visu Panel Part Number Hardware configuration PIO2	762-5203/8000-0001	762-5204/8000-0001	762-5205/8000-0001	762-5206/8000-0001
Control Panel Part Number Hardware configuration PIO3	762-5303/8000-0002	762-5304/8000-0002	762-5305/8000-0002	762-5306/8000-0002

Available Licenses for TP600 Control Panel with CODESYS 3.5

Description	License Part Number	Comment
BACnet 600	2759-286/211-1000	BACnet Unlimited Tag Objects
BACnet 600 M	2759-2286/211-1000	BACnet 256 Tag Objects
BACnet 600 S	2759-2276/211-1000	BACnet 48 Tag Objects
IEC 60870 Master L	2759-296/211-1000	Up to IEC 60870-5 connections
IEC 60870 Client L	2759-2246/211-1000	Process data from up to 4 servers with 10 requests each
DNP3 Master L	2759-2296/211-1000	Connection up to 4 DNP3 Server Connections
Multi Cloud Connectivity	2759-248/211-1000	2 different cloud systems, IoT platforms or MQTT brokers
Sparkplug	2759-247/210-1000	Add MQTT-based Sparkplug & define both topic and payload
MicroBrowser	2759-230/211-1000	Enable Java-based visualization

More information: www.wago.com/us/touchpanels/600

WAGO Corporation
N120 W19129 Freistadt Road
Germantown, Wisconsin 53022
Telephone: 800 / DIN-Rail (346-7245)
Fax: 262 / 255-3232
info.us@wago.com
www.wago.us

WAGO Canada Inc.
1550 Yorkton Court, Unit 1
Burlington, ON
L7P 5B7
Telephone: 888 / WAGO 221 (924-6221)
info.ca@wago.com
www.wago.ca

WAGO S.A. DE C.V.
Carretera estatal 431 Km. 2+200, Lote 99 Módulo 6
Parque Industrial Tecnológico Innovación Querétaro
El Marques, Qro. 76246
Lada sin Costo: 01 800 288 WAGO (288-9246)
Teléfono: 422 / 221-5946
clientes.mx@wago.com
www.wago.mx

WAGO is a registered trademark of WAGO Verwaltungsgesellschaft mbH.

"Copyright – WAGO Kontakttechnik GmbH & Co. KG – all rights reserved. The content and structure of the WAGO Websites, catalogs, videos, and other WAGO media are subject to copyright. The dissemination or changing of the content of these pages and videos is not permitted. Furthermore, the content may neither be copied nor made available to third parties for commercial purposes. Also subject to copyright are the images and videos that were made available to WAGO Kontakttechnik GmbH & Co. KG by third parties."